

Helvetica Health Care (HHC) is a broad-based health care company committed to supplying high quality, innovative products & technologies to manage health and improve the quality of life.

We reflect these values in our practices and approach to business, driven by our commitment to excellence, both in terms of product quality, our choice of partners and the service we give to our customers.

Our products range from human health to laboratory diagnostics and research products.

## Quality Control / Quality Assurance

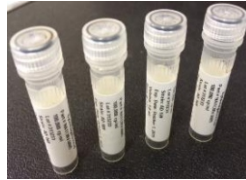
### Quantified Viral Load Controls

Intended for use in nucleic acid extraction and amplification processes alongside unknown samples to determine extraction efficiency, measure viral load of unknown samples, and validate, monitor, and troubleshoot molecular testing procedures.

### PCR-NAT Controls and standards

NATrol products are excellent standards for Nucleic Acid Testing (NAT), that control all steps in NAT testing including centrifugation, extraction, amplification and detection.

- Non-Infectious
- Refrigerator Stable (2-8°C)
- Quantitative



Live, titrated organisms - Bacteria and Microorganisms - Viral NATrol-Custom NATrol Nucleic Acid and Tests Standards - Panels and - Purified DNA - Amplification & Extraction Controls.

### Special material

- HIV, HBV and HCV positive plasma
- Genotyped samples for HIV, HCV and HBV
- Negative plasma in EDTA or citrate
- High titre HBV samples – sub type ad
- High Grade Human Serum – pooled/unpooled

### Reference & Custom panels

Custom OEM Panels-Clinical Validation Panels-Diagnostic Reference Panels-Misc Panels-Pre-post Seroconversion Panels-HBV Longitudinal Panels-HBV Vaccine Panels-HAV Vaccine Panels-Nucleic Acid Sensitivity Panels-Nucleic Acid Linearity and Quantification Panels.

### External Run Controls

NATrol external run controls are designed as full process extraction and amplification controls to validate your molecular testing on a daily basis. These controls are available for viral, bacterial, fungal and parasite detection at low and medium reactive concentrations.

### Platforms supplied



BD ProbeTec



Roche Cobas Ampliprep-Taqman



BioFire FilmArray



Meridian Illumigene



Focus Simplexa



Luminex xTAG Molecular



Nanosphere Verigene



Quidel Sofia



Siemens Versant 440



Cepheid GeneXpert



GenMark eSensor XT



Roche Light Cycler 2.0/480

### Seroconversion Panels

HIV, HBV, HCV, PCR - Large source of single donor unadulterated, asymptomatic, clinically diagnosed human reference material.

From fresh frozen unadulterated plasma, so all elements of the plasma can be examined without risk of anything being lost or modified during sample processing. Time increments between bleeds is tight so the seroconversion profile can be followed closely.

### Serological Controls

SeraCon Run Controls are intended for use in assessing the performance of immunoassay test procedures for the qualitative determination of HBsAg, anti-HIV and anti-HCV.



### HCV Seroconversion Panel

(Catalog No. HCV 10002)

Donor Demographics: Donor source plasma was collected from a U.S. licensed blood collection facility. Donor was untreated and asymptomatic throughout the collection period.

\*Source Plasma was collected under informed consent from a U.S. Licensed Blood Bank.

HCV Genotype: 1

Donor No. 69554

For Research Use Only

Panel Number	Wave Date	ALT (U/L)	ALPHA HCV (IU/mL)	ABOTT HCV (IU/mL)	ABOTT HCV (IU/mL)	ABOTT HCV (IU/mL)	ABOTT HCV (IU/mL)	ABOTT HCV (IU/mL)	ABOTT HCV (IU/mL)	ABOTT HCV (IU/mL)	ORION HCV (IU/mL)	ORION HCV (IU/mL)	ORION HCV (IU/mL)
10001-01	12/15/00	0	Negative	0.000	0.000	0.000	0.000	0.000	0.000	0.000	0.000	0.000	0.000
10001-02	1/15/01	0	Negative	0.000	0.000	0.000	0.000	0.000	0.000	0.000	0.000	0.000	0.000
10001-03	2/15/01	15	Positive	0.000	0.000	0.000	0.000	0.000	0.000	0.000	0.000	0.000	0.000
10001-04	3/15/01	40	Positive	0.000	0.000	0.000	0.000	0.000	0.000	0.000	0.000	0.000	0.000
10001-05	4/15/01	30	Positive	0.000	0.000	0.000	0.000	0.000	0.000	0.000	0.000	0.000	0.000
10001-06	5/15/01	20	Positive	0.000	0.000	0.000	0.000	0.000	0.000	0.000	0.000	0.000	0.000
10001-07	6/15/01	10	Positive	0.000	0.000	0.000	0.000	0.000	0.000	0.000	0.000	0.000	0.000

## Life Science

### Monoclonal / Polyclonal Antibodies



These antibodies are directed against specific human viral proteins and are highly specific in immunoassays. These are useful in a variety of applications including ELISA, immunoblotting and immuno-histochemistry, HIV-1, HTLV I, HTLV II.

### Western Blot Kits

Western blotting allows visualization of antibodies directed against specific viral proteins. Available for SIV.

#### Autoblot 3000

The AutoBlot Western blot processor sets the standard for bench top processing.



### Oxidative Stress

Test kits and testing services for measurement and standardization of oxidative states.



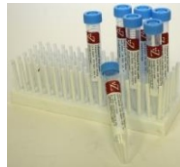
### Cellkines (Cytokines/Growth Factors)



CELLKINES are natural or recombinant human cytokines or growth factors. The source for all recombinant human cytokines is E. coli unless otherwise noted.

### Purified Viral Lysates / Proteins

Crude, infectious supernatants through sucrose purified lysates and purified native viral proteins.



### Antibody tests

For qualitative and semi-quantitative detection of IgG antibody in human serum or plasma.

HHV-6 IgG Antibody ELISA - HHV-7 IgG antibody IFA - KSHV/HHV-8 IgG ELISA.

### ELISA Kits – Immunology

IMMUNO-TEK kits have been designed for the quantitative measurement of IgG, IgM and IgA from cell culture ascites and other biological fluids.



IMMUNOTEK kits can detect and quantify various immunoglobulins from many species including Human and Mouse.

### ELISA Kits - Virology



RETRO-TEK kits have been designed for the quantitative measurement of viral antigens from the retroviruses HIV-1, SIV and HTLV found in cell culture, serum, plasma or other biological fluids of research specimens.

Useful in monitoring viral cultures, purification procedures and biochemical behaviour of the virus.

## Diagnostics

### Diagnostic Virology - Rapid Tests

- **HCVSCAN & HIVSCAN**  
Rapid test - results in less than 5 minutes - High Sensitivity (>99%) & Specificity (>99%) - Easy to use and interpret - storage at room temperature
- **InstantChek HIV 1+2**  
Rapid test - results in less 1 minute - High Sensitivity (100%) & Specificity (>99.5%) - 3 step test - Easy to use and interpret - Storage room temperature



### Diagnostic Microbiology - Rapid Tests

- **Strep A Chek** : rapid test (within 30 min) for detection of Neisseria gonorrhoeae, Neisseria meningitidis, Neisseria lactamica, and Branhamella catarrhalis.
- **Gonochek II** : rapid test for the presumptive identification of Group A, -b hemolytic streptococci.

**Helvetica Health Care offers unrivalled service and expertise :**

**48h monitored delivery - Free shipping - Logistics services and solutions door to door worldwide - On line technical support - Special prices for periodical/annual supplies - Intra-community supplies, VAT and duties exempt within EU**

Contact us by e-mail, by chat through our quotation system on our website or by phone.